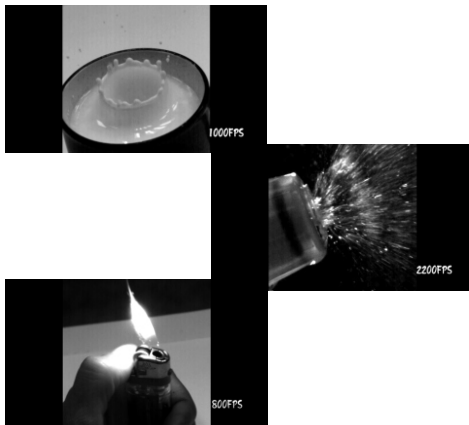




## Professional Slow Motion Camera 9502

- First affordable 8960FPS high speed camera on market
- Compact size with rugged metal enclosure
- Compatible with any C-mount camera lens
- Dual color LED as status indicator
- Powered by 9 to 24VDC adaptor (included)
- 5Mega pixel 1 inch CMOS sensor with global shutter
- At least 140FPS at max. resolution (2560 x 1024)
- Maximum speed achieves 8960 FPS (320 x 128)
- USB 3.0 interface cooperate with enclosed PC software to do record, review and file convert
- Remote trigger cable included. Socket for synchronizing multi-camera via RS-422/TTL is also built-in
- Ready to use right out of the box, no need to purchase other accessories



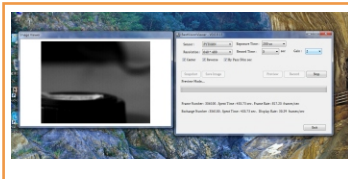
To characterize events which happen too fast for traditional film speeds, such as Life Science, Physical Science, Machine Vision, Sport, Ballistics, Industry, Automobile, Explosives, Fluid Dynamics, Material Science

### Two steps to take photos

STEP1: Connecting camera with computer



STEP2: Setup camera & fine tune through PC



### Ordering Code

VZ9502AZ, 9502 slow motion camera set

\*Available for EB project

Model	9502
CMOS	5 Mega pixel, 1" optical format, global shutter
Maximum Speed	8960 FPS (320 x 128) 2560 x 1024 @ 140 FPS 1920 x 768 @ 245 FPS 1280 x 512 @ 560 FPS
Res (HxV)vs FPS	800 x 320 @ 1432 FPS 640 x 256 @ 2240 FPS 320 x 128 @ 4555 FPS
Pixel Size	5 um Sq. pixels
Maximum Shutter	1uS
Light Sensitivity (Analog gain control)	ISO 100-6400 (monochrome) 1x/2x/4x/8x/16x/32x/64x
Digital gain control	0.01~16x
Standard Memory	Video stored in host PC
Image Output	*.bmp/* .jpg/* .png/
Video Output	MPEG2(*.mpg) / H.264(*.mp4)
Power Input	External DC9~24V
Camera Control	USB 3.0 (USB 3.1/3.2 Gen1) super speed
Trigger Input	remote trigger cable & IN1: TTL/RS-422 from expansion I/O connector
Trigger Output	OUT1: Trigger In1 bypass for multi-camera trigger synchronization OUT2: Exposure indicator signal for lighting strobe control
Display or LED	Dual color LED
Compatible Lens	C-mount/CS-mount
Software License	Not required
Housing	Aluminum
Size & Weight (g)	60x60x50 mm, 258g exclusive of lens
Operation condition	0° to 40°C/ 20 to 80%,no condensation ;
Storage condition	-20° to 60°C/20 to 95%,no condensation
Upgradable	USB 3.0 field upgradable
Country of Origin	Taiwan
Package	Camerax1, Lens x1, LED light set x 1, power adaptor x 2, USB 3.0 Cable x1,remote trigger x1, carry case x1, CDx1, manual x1, tripod x 2

### Compatible PC

-Above i3 CPU,8GB RAM,  
USB3.0 port (3.1/3.2 Gen 1)  
-Win7,Win 8,Win 10& Win 11

### C-mount len Option

Standard: CHIOPT, HC5005A, 1", F1.4, f=50mm  
More C-mount lens available upon request

# HIGH SPEED CAMERA



## Camera



## Lens



## Remote Trigger



## USB3.0 cable+software





Adjustable power, maximum **33W**

## Dimmable LED Video Light

### **33W super bright LED**

Color temperature: 5600K

@0.5m is 35800lux

@1m is 9600 lux

@2m is 2500 lux

### **0~100% Dimmer feature**

### **Power adaptor with universal plugs**

-Input: AC 100-240V

-Output: DC 14V

Below factors determine whether the enclosed LED light is enough for you or you need to purchase another stronger power light:

- The reflectivity of the photographed object to light. ex: Metal and rubber, white and black objects all have different reflectivities.
- The location of the light source, the distance from the subject, the size of the subject, and the area illuminated by the light source are also influencing parameters.
- Distance from camera to subject, camera exposure time, camera ISO value
- Lens focal length and aperture size

If the enclosed LED light could not fulfill your particular photo taking purpose, please consider to purchase new light.

One successful application we have is 8000 fps milk crown photo shooting by using enclosed LED light.

Frame per second: 8000 fps

Resolution: 320 x 128

Exposure time: 100 us

ISO value: 100

Digital gain: 1x

Working distance of lens: 500 mm

Working distance of lightning: 500 mm

Lens aperture size: F4

Field of view: 50 mm x 20 mm

Light source brightness: 100%

[Scan to see video](#)

