

(PATENTED) DISSOLVED OXYGEN (D.O.) PEN

NEW



Dissolved Oxygen Pen w/ long cable floating probe 84131

- Big LCD with D.O. & Temperature display
- 100% D.O. calibration in air. Chemical is not required
- Easy replaceable thin membrane kit with high sensitivity
- Refill electrolyte quickly. Simple to maintain
- Selectable % and mg/L unit for D.O. Value
- °C/°F automatic temperature compensation built-in
- Manual salinity and barometric pressure compensation
- Environment green re-chargable battery via type C port
- Brightness adjustable backlight for dark places



Auto Power Off



Low Battery



HOLD



Auto Temp. Compensation



Metric/Imperial



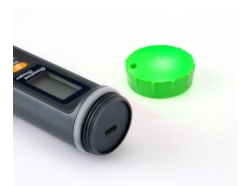
Backlight



IP65

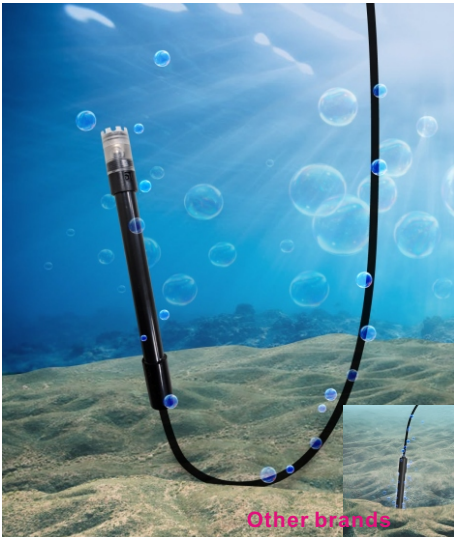


USB TypeC for power charging

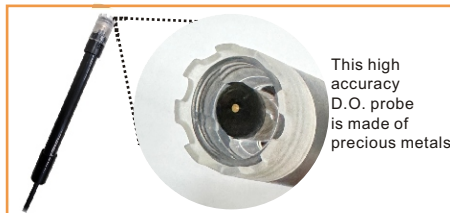


Patented Design

Clever design to ensure you always get reading from water not from sand



Standard:



This high accuracy D.O. probe is made of precious metals

D.O. REPLACEMENT PROBE

P/N: VZ84131PAZ

Size: 15(dia.) x 175mm(l)

Cable length : 3 meters

2pieces of spare membrane kits are included with each probe

Ordering Code

VZ84131AZ, 84131 meter w/84131P D.O. Probe

VZ84131PAZ, 3M long cable floating D.O probe for 84131/8413

VZ84131PAZ1, 5M long cable floating D.O. Probe for 84131/8413

VZ84131PAZ2, 5 membrane cap w/2 electrolyte set

VZ8413PAZ, 3M long cable D.O probe with protection cap for 84131/8413

| Model | 84131 |
|-------------------------|---|
| DO range (in mg/L) | 0.00~20.00 mg/L |
| DO accuracy | +/-0.4 mg/L |
| DO resolution | 0.01 mg/L |
| DO range (in %) | 0.0~199.9 |
| DO accuracy | +/-3% F.S |
| DO resolution | 0.1 % |
| Temp. range | 0~50.0°C/32~122°F |
| Temp. accuracy | +/-0.5°C/0.9°F |
| Temp. resolution | 0.1°C |
| Auto Temp. Compensation | 10~40.0°C/50~104°F |
| Manual Compensation | INCLUDED |
| Salinity range | 0.0~45.0 ppt |
| Salinity res. | 0.1 ppt |
| Barometric pressure | 500~760mmHg/101.3~66.7Kpa |
| Pressure res. | 1mmHg/0.1KPa |
| LCD size | 30(H)x18(W)mm |
| Operating temp. | 0~40°C |
| Operating RH% | Humidity <85% |
| Storage temp. | 0~40°C |
| Storage RH% | Humidity < 80% |
| Sensor response time | <30 seconds for D.O., <90 seconds for Temp. |
| Sensor warmup time | <60 seconds after power up |
| Sensor life time | >6 months (with good maintenance) |
| Dimension | 176(L)x39(W)x39(H) |
| Weight | 265g |
| Battery | 3.7V@500mAh re-chargable battery |
| Power consumption | 60 hours operation (no backlight condition) |
| Re-charging time | 1.5 hours |
| Standard Package | Meter (with bat. Built-in)/D.O. Probe/Electrolyte /2pcs membrane kits/USB-type C charging cable/ hard storage case/manual |



*Available for EB project